

Rear Trunk Lid

The trunk lid on the roadster has to be hinged in such a fashion that the front of the trunk pivots down to clear the motor deck lid. This involves locating the hinges in from the front edge of the trunk.

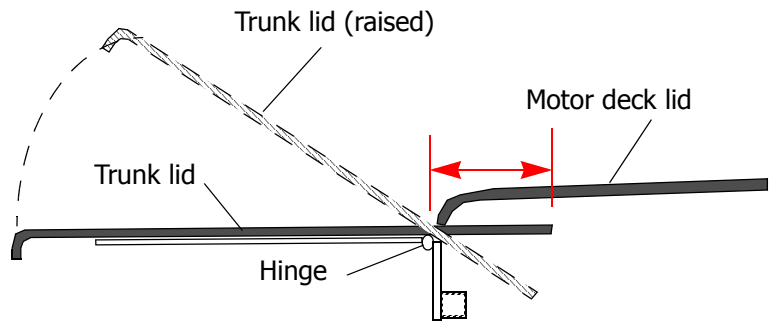


FIGURE 128. Pivot diagram

One of the differences that is used on the trunk lid is to extend the hinge to extend the full length of the trunk. The reason for doing this is to provide a structural component for mounting the wing. **This will require test locating the wing to determine where the hinges need to be positioned.**

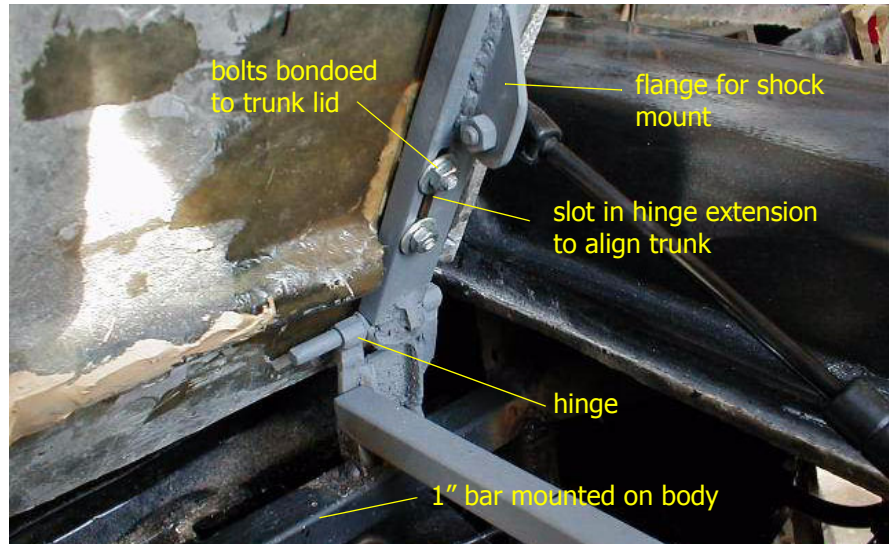


FIGURE 129. Trunk hinge assembly

It is necessary to assemble a framework for the trunk latch as well as a mounting point for the shocks that hold up the trunk lid. This assembly is also used as part of the framework that is used for the sheet metal that will frame the trunk.

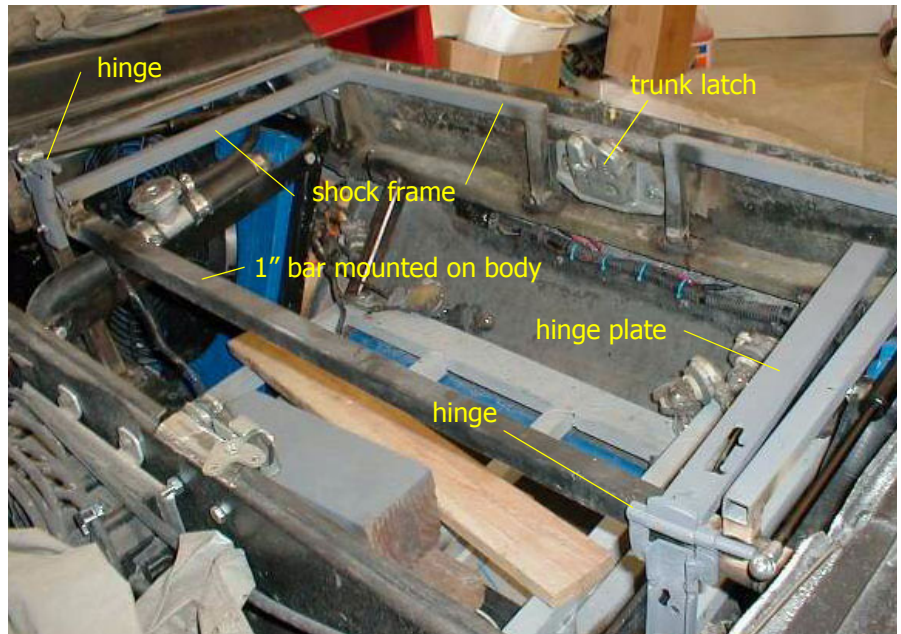


FIGURE 130. Shock and latch layout

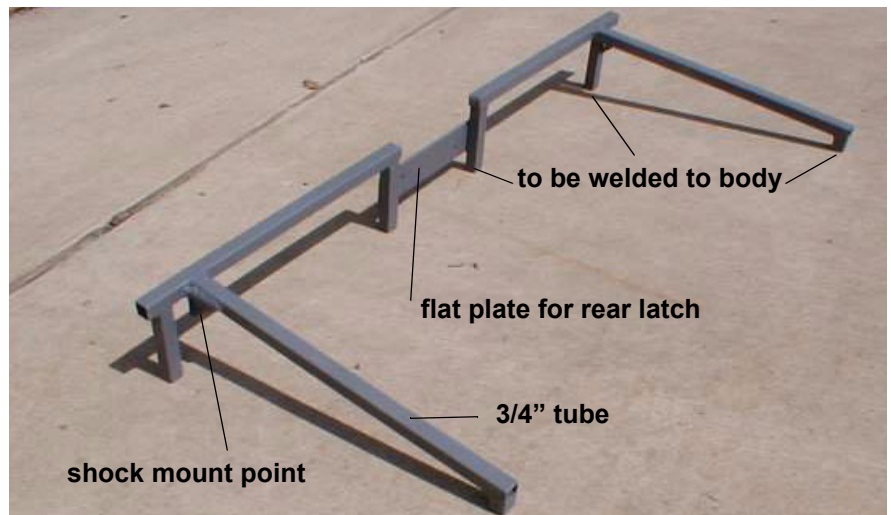


FIGURE 131. Shock framework



Trunk floor

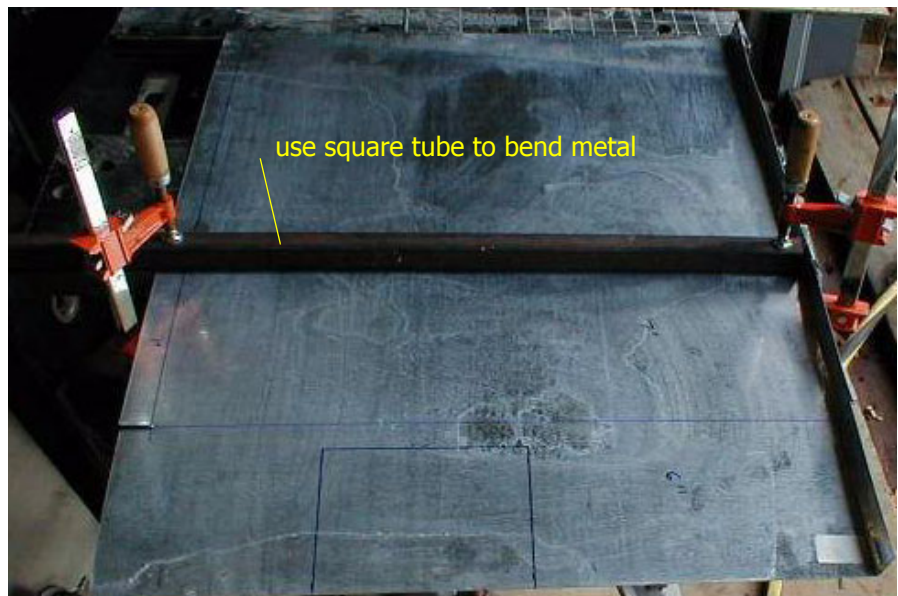
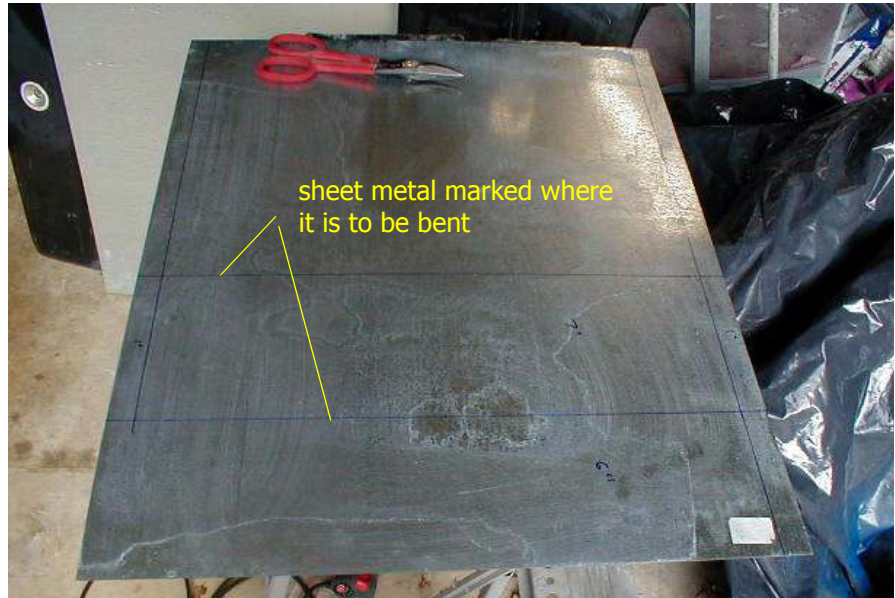
Depending on the motor configuration, you may be able to retain part of the Fiero trunk or you may need to construct your own trunk area. This will

require framing in an area with 1" tube to create the floor. these pieces are welded to 1" x 2" tube that has been welded to the body.



Once you have the frame completed, you can begin the process of filling in the area with sheet metal. The best way to do this is to begin with a paper template that can be used for cutting the sheet metal. Each trunk may be different because of the configurations. This illustration shows how the trunk is constructed around the rear radiators and piping to still give a small storage area.

If you have access to a break machine to bend the sheet metal that is ideal. However you can accomplish this by using clamps, square tube, patience and a rubber hammer to create a straight crease in the sheet metal.





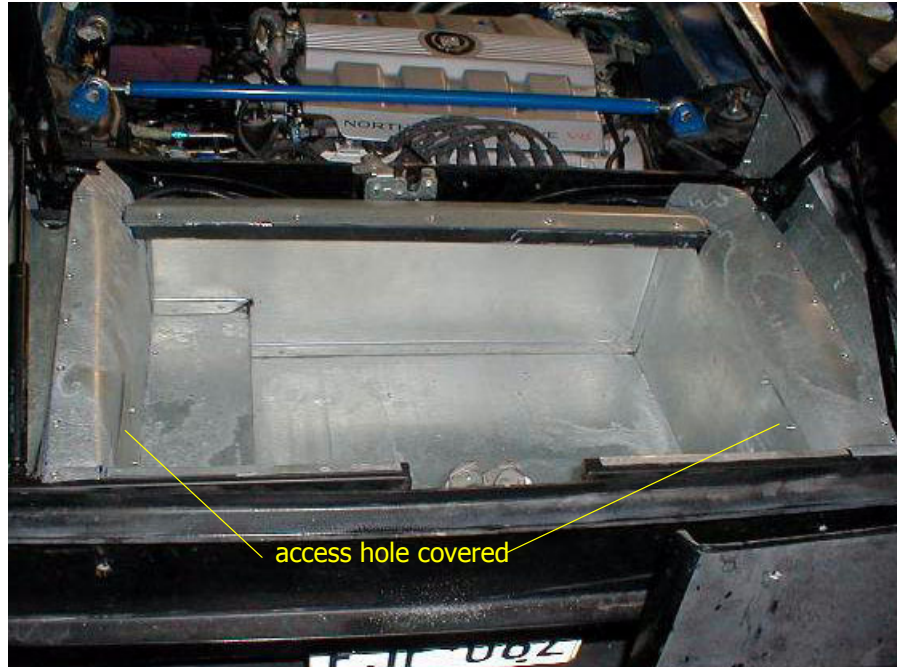


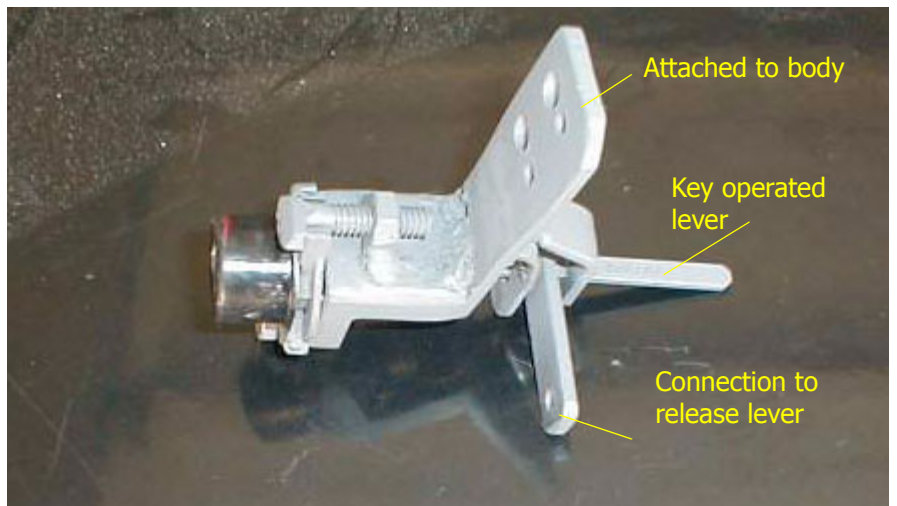
FIGURE 132. Finished trunk metal

Rear Trunk Latch

After fastening the framework to the body, you have several options on how to open the trunk. Here you see how the Fiero trunk lock was moved to the side of the taillight. This involved fabricating a special bracket, mounting and rods to open the trunk.



Lock modifications are shown below



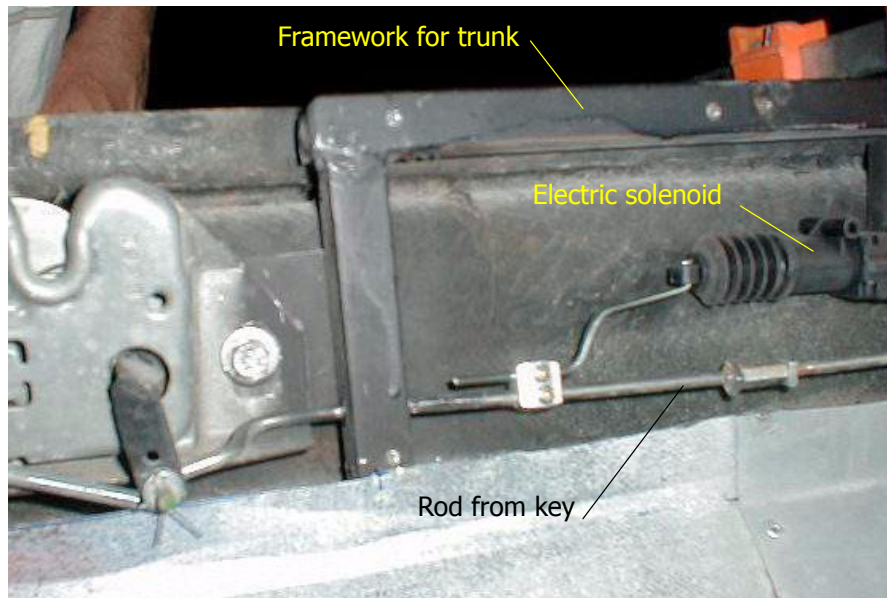
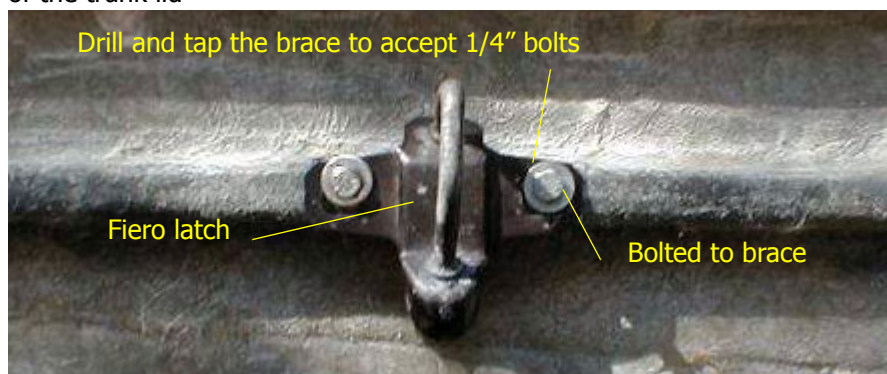


FIGURE 133. Rear trunk latch

Using this setup, you can use the key to open the trunk or you can use your keyless entry system to activate the electric solenoid.

The other part of the latch mechanism is fastened to the bracing on the top of the trunk lid



Rain Gutter

The gap between the rear deck lid and the trunk can be filled in with a piece of sheet metal to act as a rain gutter.

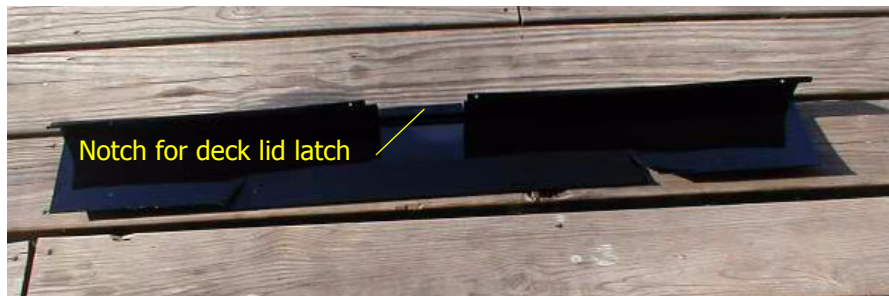


FIGURE 134. Rain Gutter

Trunk Lining

The trunk can be lined with a special Trunk Lining Carpet. Before installing the carpet, you can use Trunk Splatter paint on the inside of the trunk lid as well as the area where the shocks are installed.

